

Lutterloh Patterns Newsletter

No 31 - November

Friendship is Sewn with Love and Measured by Kindness

INDEX

[Cowl Neckline - Designing](#)

[Supplement # 275](#)

WEBSITE LINKS

[About Us](#)

[Lutterloh Patterns](#)

[Online Classes](#)

[Online Projects](#)

[Show and Tell](#)

[Year Program](#)

[Contact Us](#)

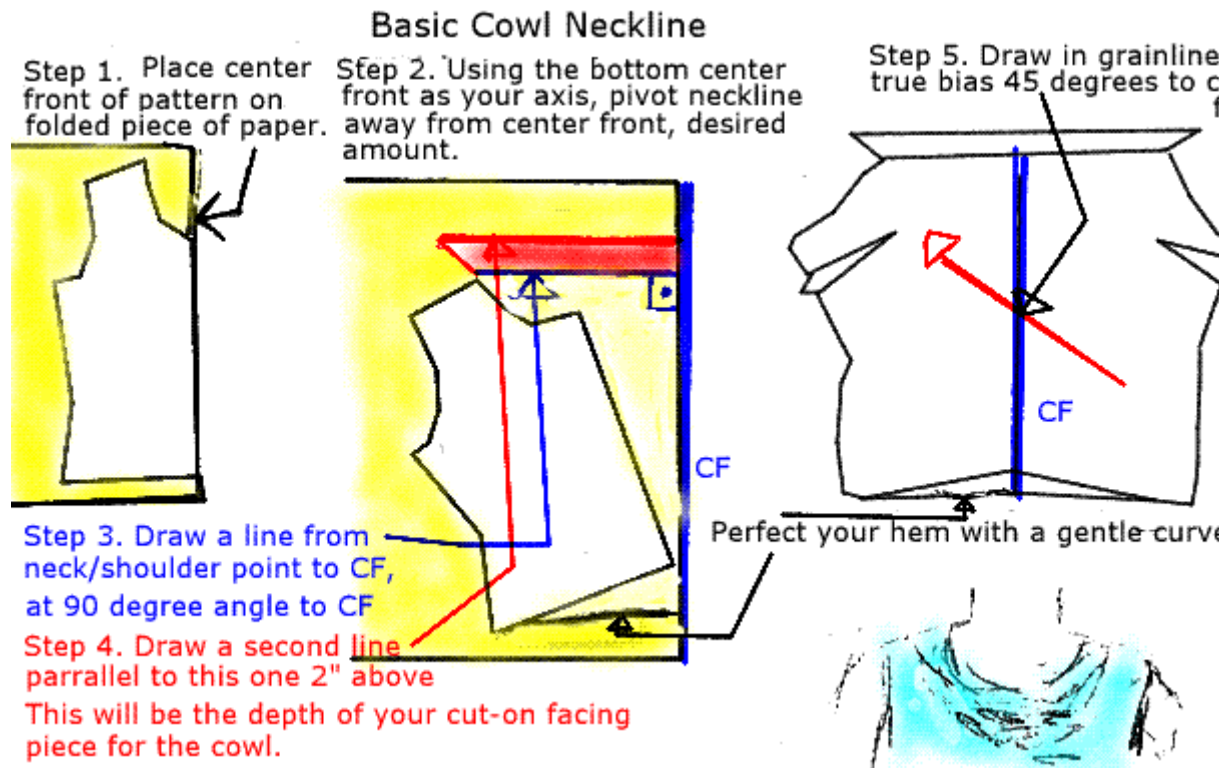
[Subscribe](#)

Cowl neckline - Designing

The shape and depth of a neckline is an important point on a garment and unfashionable neckline dates a garment immediately. Whatever the fashion, however, the neckline must balance with the rest of the garment design and must be suitable, both for the type of garment and for the fabric in which it will be made. Most important it must suite the body shape.

Unfortunately, the appearance of necklines can be very deceptive, and the lines drawn on a pattern during drafting may prove to be incorrect when fitted on a figure. Fit your master pattern and make the necessary markings where you want the new neckline to be. Pre-test on a cheaper fabric, do the necessary changes according to your shape and do another master pattern for your shape with different necklines.

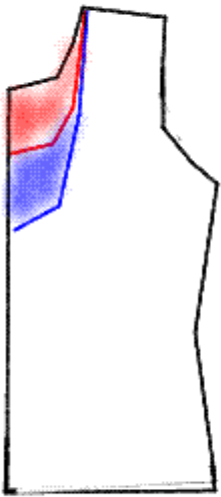
Use any simple T-shirt pattern as your master pattern. Please remember not to copy and draw on your master pattern. Create different cowl-necklines by playing with this master pattern. Choose fabric with a soft drape. Please try the pattern on an old sheet or fabric, keep the sample in a file for back reference.



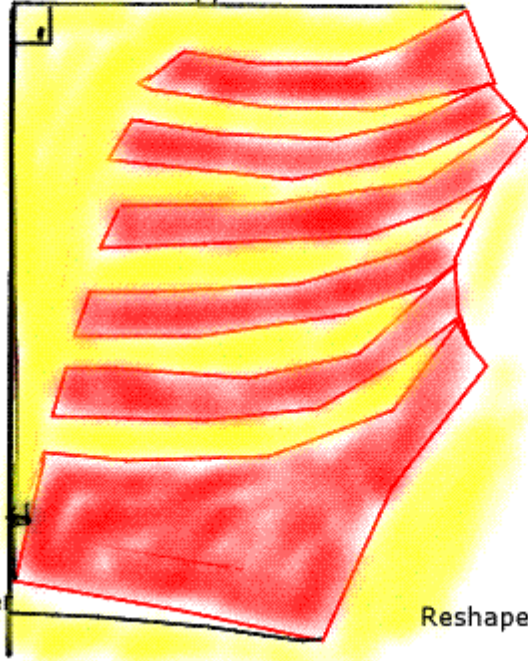
The next cowl-necklines are lower and have more folds in the fabric.

Cowl-neck Variations

Change T-shirt pattern to scoop/U-neck line



Place pattern on 30 degree angle on paper



Finish neck off 90 degree to shoulder seam

Cut paper pattern open spread open to get more folds in cowl neck

Reshape hemline

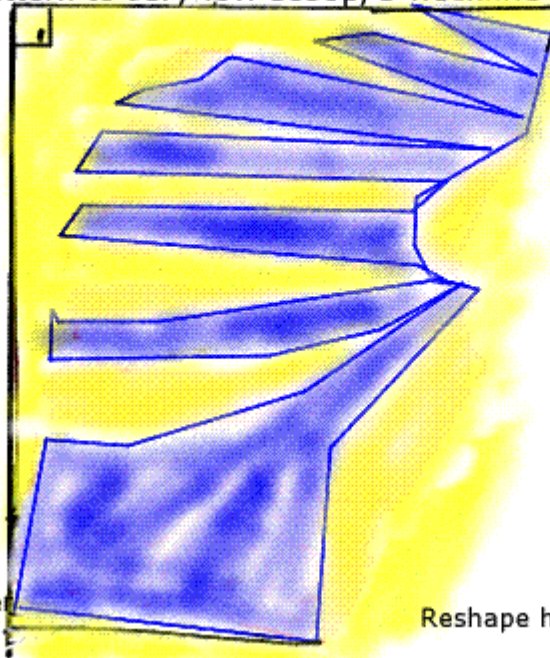
The next one is very low cowl-neck, either you need to wear a camisole or singlet under it, or cut a Scoop neck pattern front and sew as one, the lower cowl over the scoop neck pattern!

Cowl-neck Variations

Change T-shirt pattern to very low scoop/U neckline



Place pattern on 30 degree angle on paper



Finish neck off 90 degree to shoulder seam

Cut paper pattern open spread open to get soft folds in cowl neck

Reshape hemline

Remember to change the grainline to the Bias Grain - explained in step 5 -Picture 1 (Basic Cowlneck)

SUPPLEMENT # 275 (Winter edition)

The most recent Supplement # 275 (Winter) has arrived.

If you click on the following link on our website:

http://www.dressmaking.co.nz/lutt_patterns.htm and then click on the "**Model Preview**" you can view the patterns in this supplement

The 40 patterns are available at US\$22 plus shipment. You can also subscribe for a full year and receive 4 supplements of 40 patterns each for US\$66 plus shipment. To order, please go to the ORDER link and follow the instructions on our SECURE website.

Copyright 2004 Lutterloh Patterns. All rights reserved.

Lutterloh Patterns is committed to protecting your privacy. We do not sell, trade, rent or otherwise disclose any personal information you provide to us.