

# LUTTERLOH PATTERNS (NZ) Newsletter

No 17 - May 2006

**Behind every sewer.....is a huge pile of fabric!!**

## **INDEX**

[Two Part Sleeves](#)

[Online Classes](#)

[Sewing Tip](#)

[Supplement no 261](#)

## **WEBSITE LINKS**

[About Us](#)

[Lutterloh Patterns](#)

[Online Classes](#)

[Year Program](#)

[Contact Us](#)

[Personal Style](#)

[Subscribe](#)

## **TWO PART SLEEVES:**

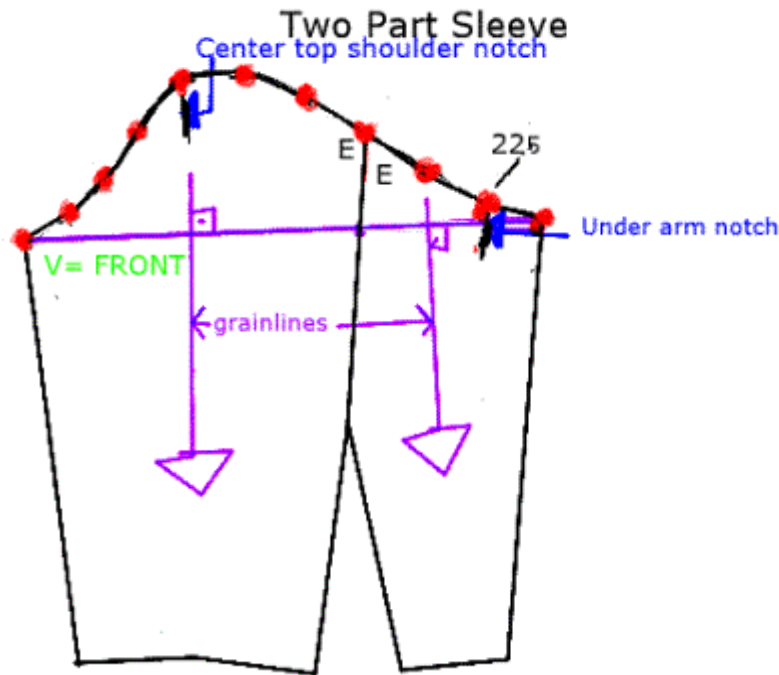
Fit a tailored jacket in the shops you will notice that your under arm seam is not in line with your under arm seam of the garment!

When you do a two part sleeve or tailored sleeve, the under arm seam is usually moved forward to the front garment by any thing from 1-2" (or I like to use my fingers 2 - 3 fingers.)

In the E-Book, on page 6 the sleeve symbols are explained!

The Front (V) and shoulder notch at the top are very important to transfer to your pattern and also the garment fabric. Please transfer all these notches to your pattern. It will make you stitching easier.

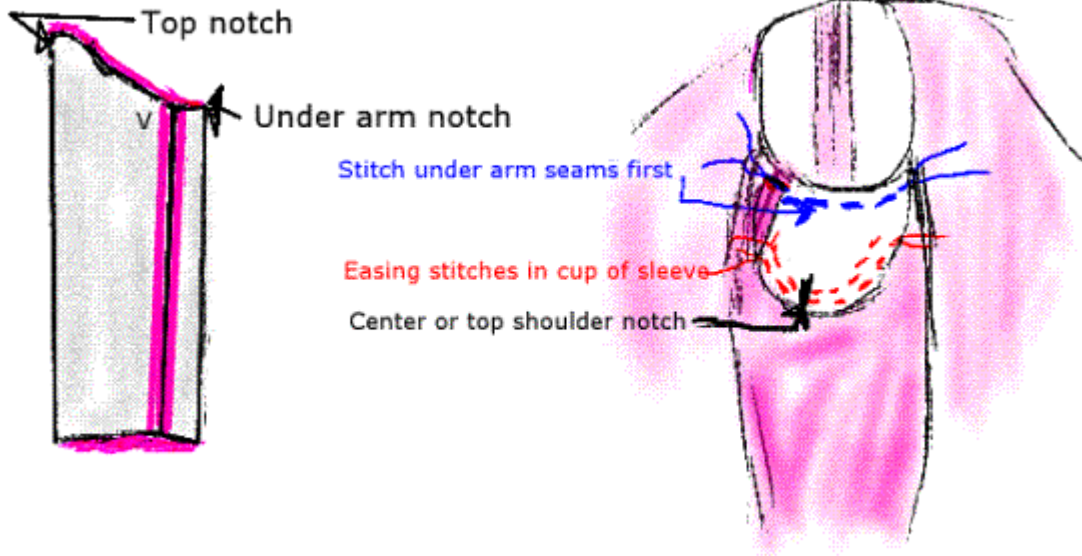
On some patterns they have added the under arm notch (look at #203 - MMIII). See below the second dot from the under arm sleeve (the number on the dot is 22½), you will also see a minute line below it. (Same as the top shoulder notch.) This is your under arm - notch .



Not all sleeves have the under arm notch marked on it, An easy way to work out the under arm notch is to sew the two sleeves together. You should have a complete sleeve, ready to insert in armhole.

Hold the top of the sleeve at the center top notch fold the front onto the back at the edges and you will determine the under arm notch!

### Two part sleeve Determine under arm notch.



Stitch under arm of the sleeve first, matching under arm notches!

Pin top shoulder notch to shoulder seam of garment. Ease sleeve cup into armhole, pin roughly. FIT! FIT! Fitting now is very important, sometimes this notch will go a little to the back garment and sometimes to the front. All depends on figure type. Do a bit of fine tuning.

This to me is the easiest way of stitching my tailored sleeves, hope this will help you

as well!

## **ONLINE CLASSES**

The following Online Classes will commence on Monday 10 July 2006:

- [Lined Jackets](#)
- [Plackets](#)
- [Collars](#)
- [Bias-cut Pattern Making](#)

For more information about the Classes and/or to Enrol please click on the appropriate Class and follow the instructions.

## **SEWING TIP**

Give yourself enough time to sew whatever sewing project you're planning. You will probably complete it much sooner if you're not racing against time.

## **ENJOY THE SEWING JOURNEY!**

## **SUPPLEMENT NO 261 (Summer edition)**

The most recent Supplement number 261 (Summer) is now available. In there, you will find the following interesting patterns:

### **Townsville - Queensland and other hot places... this is one for you!**

#### **Skirts;**

Quite a few variety's to choose from

#### **Trousers;**

A Pedal Pusher in stretch fabric, a must for summer. Hipster with shaped waistband and interesting pocket for the young!

Smart/Casual trousers with straight legs.

#### **Dresses Galore;**

Empire, Princess lines, Shirtwaister, Shift with French darts, Halter neck.

Some are sleeveless, some short sleeves, which can easily be changed to long sleeves (for those of us that's going into winter) and the one of my favourites; a cap sleeve.

Necklines galore as well – V-necks, Square necks,

U-neck, Collars and a Mandarin collar(Chinese look) and a keyhole.

### **Tops;- All sorts,**

T-shirt – empire line with cap sleeves.

A good classic shirt pattern with separate collar stand.

Princess line capped sleeve mandarin collar.

Low V-neck with cut away arms in stretch fabric.

Halter neck that the young ones will love!

Safari-style blouse that could also work as a good casual jacket.

### **Jackets;**

Not much in the jacket section, except for the safari style blouse that could be changed into a casual jacket.

Bolero Jacket to wear over all the summer dresses for an evening out.

### **Fuller figure**

Good Princess V-neckline with loose overcoat, made in chiffon, just the thing for the mom of the bride!

Shirtwaister – classic with three=quarter wide leg trousers.

Empire line Versatile top – cross over included and 3 different options for sleeves.

Princess line square neck top or dress and skirt that can also be used for a good camisole and Slip pattern

### **Children**

Girls 5-9 size

Swimwear – nice vest type top and good bikini knickers.

Dressing Gown with Hoodie, which can also be used for boys.

The 40 patterns are available at US\$21 plus shipment. You can also subscribe for a full year and receive 4 supplements of 40 patterns each for US\$63 plus postage. To order please go to [ORDER](#) and follow the instructions.

*Copyright 2006 Sewing With Pride. All rights reserved.*

*Sewing With Pride is committed to protecting your privacy. We do not sell, trade, rent or otherwise disclose any personal information you provide to us.*