

Touch these scissors....and die!!

INDEX

[A Simple twist on a Blouse Pattern](#)

[New Classic edition](#)

[Supplement 277](#)

WEBSITE LINKS

[About Us](#)

[Lutterloh Patterns](#)

[Online Classes](#)

[Year Program](#)

[Contact Us](#)

[Personal Style](#)

A Simple Twist on a Blouse Pattern

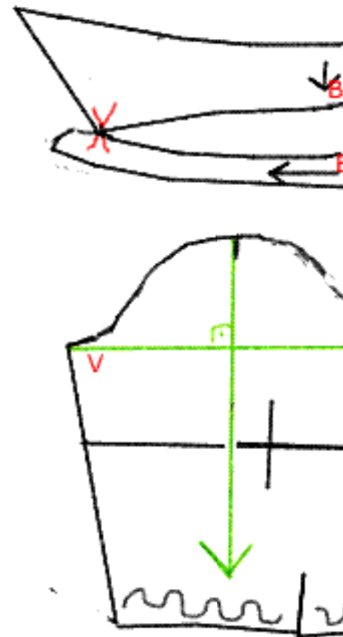
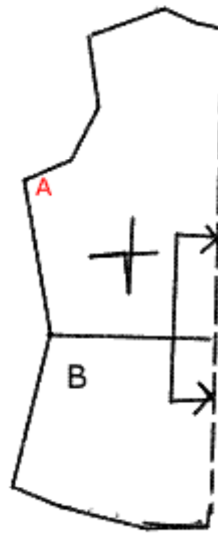
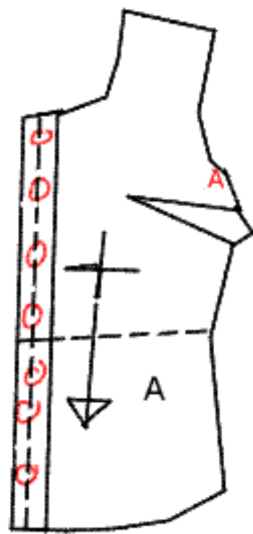
I used blouse #245 MVI - you can select any blouse pattern in your selection with a dart. Remember to fit your pattern and check the length, also the length of the sleeve seam allowances when ready to cut fabric, after you are satisfied with the fit.

#245 Blouse with a simple twist



Blouse #245 - MMVI

Subscribe



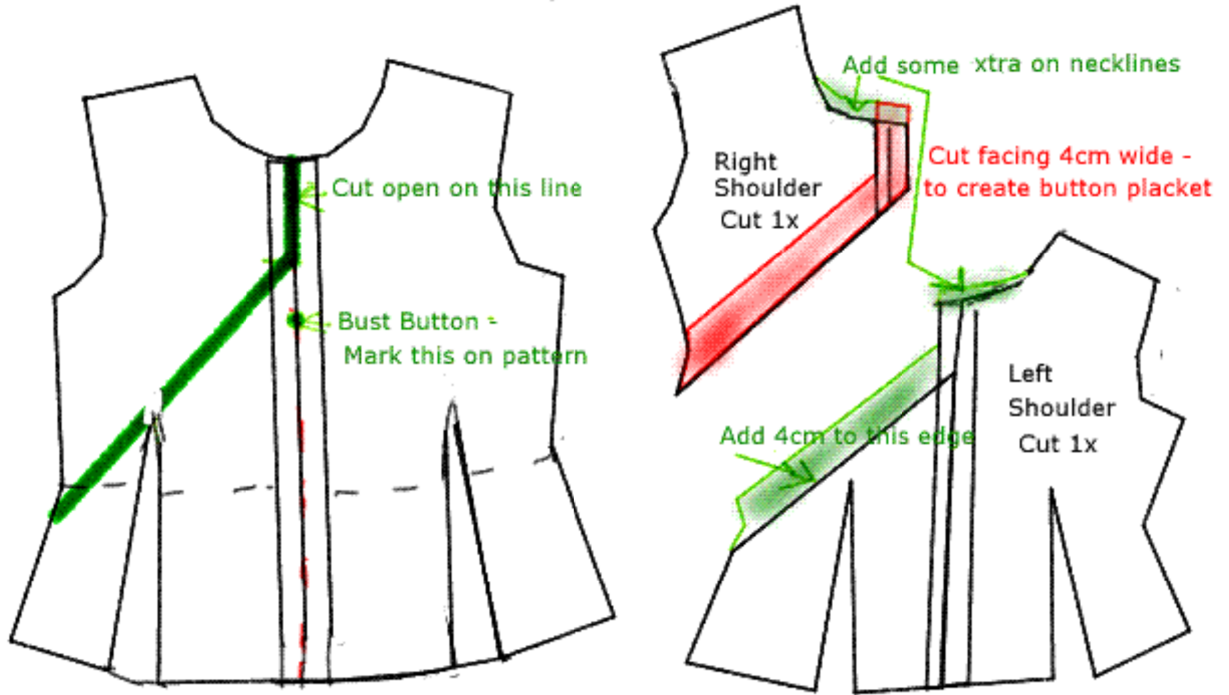
Change the underarm bust dart to your waist dart:

- How to Move a dart**
1. 1. **apex**
 2. 2. **apex**
Draw lines to extend the dart to the apex
 3. 3. **Cut out extended dart**
At new dart position, draw a line and cut up to to apex
 4. 4. **Close old dart**
New dart appears
 5. 5. **1"**
After moving the dart, place tissue paper under new dart opening and tape in place. Then draw the dart stitching lines so the dart ends approximately 1" from apex

Cut two front sections - paper patterns; Overlap patterns so the center fronts match up. Draw new darts

Draw new darts

Blouse #245 - Asymmetrical variation

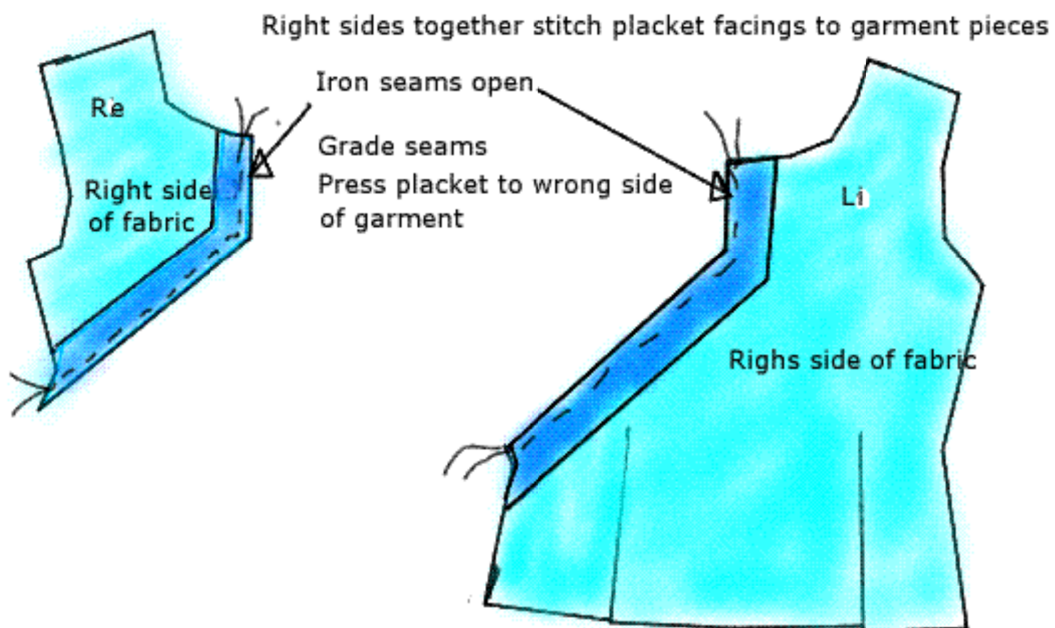


- Paper pattern - Cut one left shoulder - Cut one left shoulder button placket-4cm width.
- Fabric - Cut one left shoulder - Cut one left shoulder button placket-4cm width with added seam allowance and one interfacing for button placket - iron-on.
- Paper pattern - Cut one right shoulder - Cut one right shoulder button placket-4cm width.
- Fabric - Cut one right shoulder - Cut one right shoulder button placket-4cm width with added seam allowance and one interfacing for button placket - iron-on.

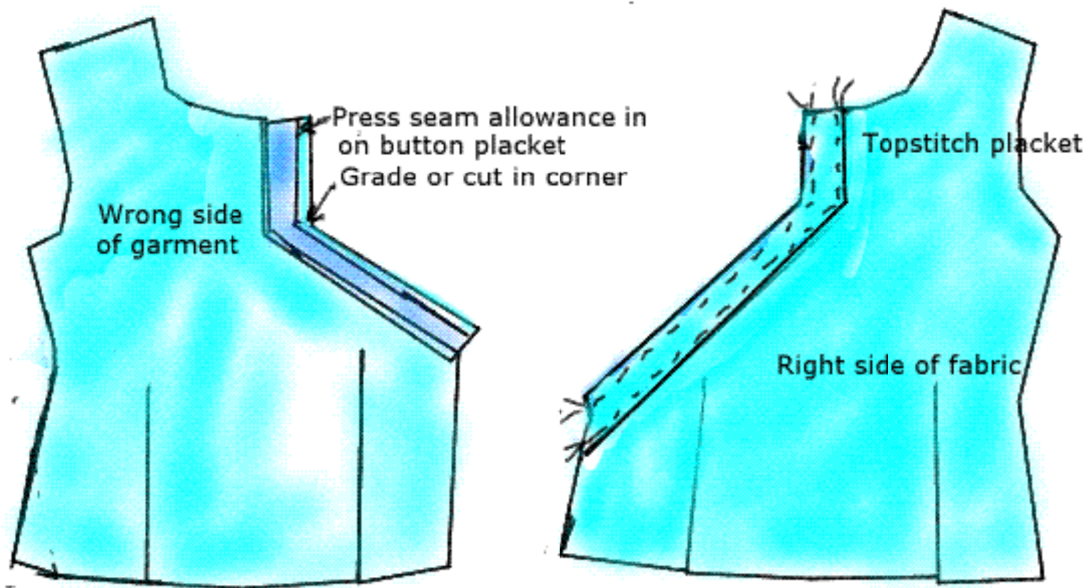
Sew placket facings to garment sections, press seams open, grade seams. Turn placket facings to the right side of the garment, press seam flat. Press outer seam edge of placket to wrong side of placket and baste. Topstitch placket on right side of garment, press. Do exactly the same with the left side of the front placket.

#245 -Asymmetrical Blouse - Button Placket

Re- Right Part of garment
 Li - Left part of garment



#245 -Asymmetrical Blouse - Button Placket



Sew shoulder seams front and back together, press.

Prepare collar:

Collarstand/collarband; Grade neckline of shirt's so it's compatible to your collarband.

Carboard template for corner of collar stand

Diagram 1

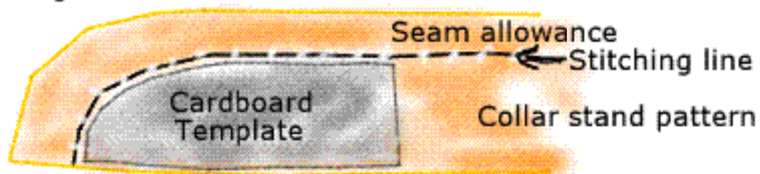


Diagram 2

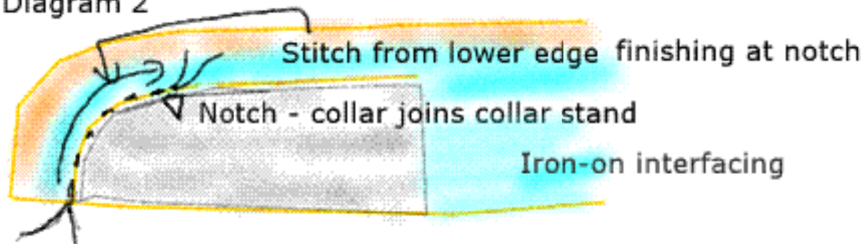
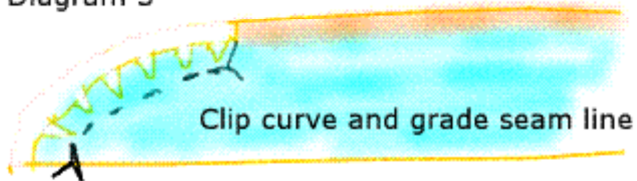


Diagram 3



Collar stand

Diagram 4

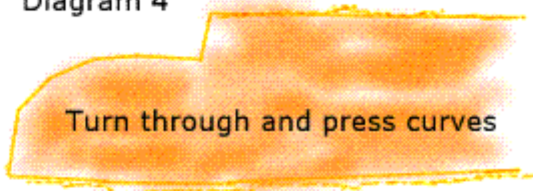


Diagram 5

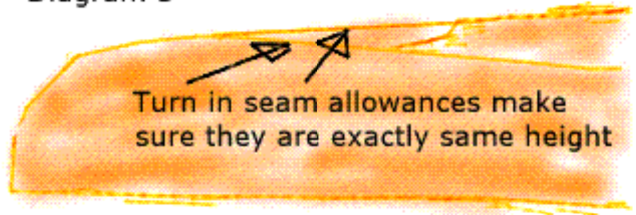


Diagram 6

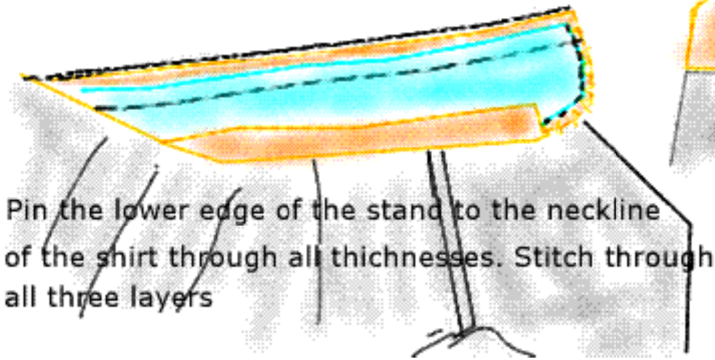
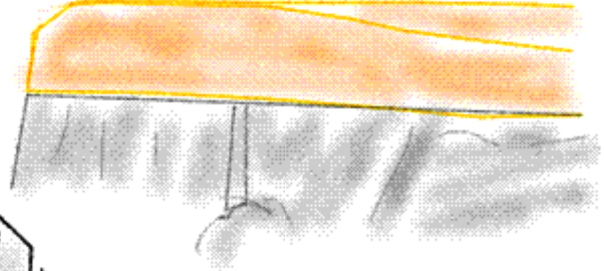
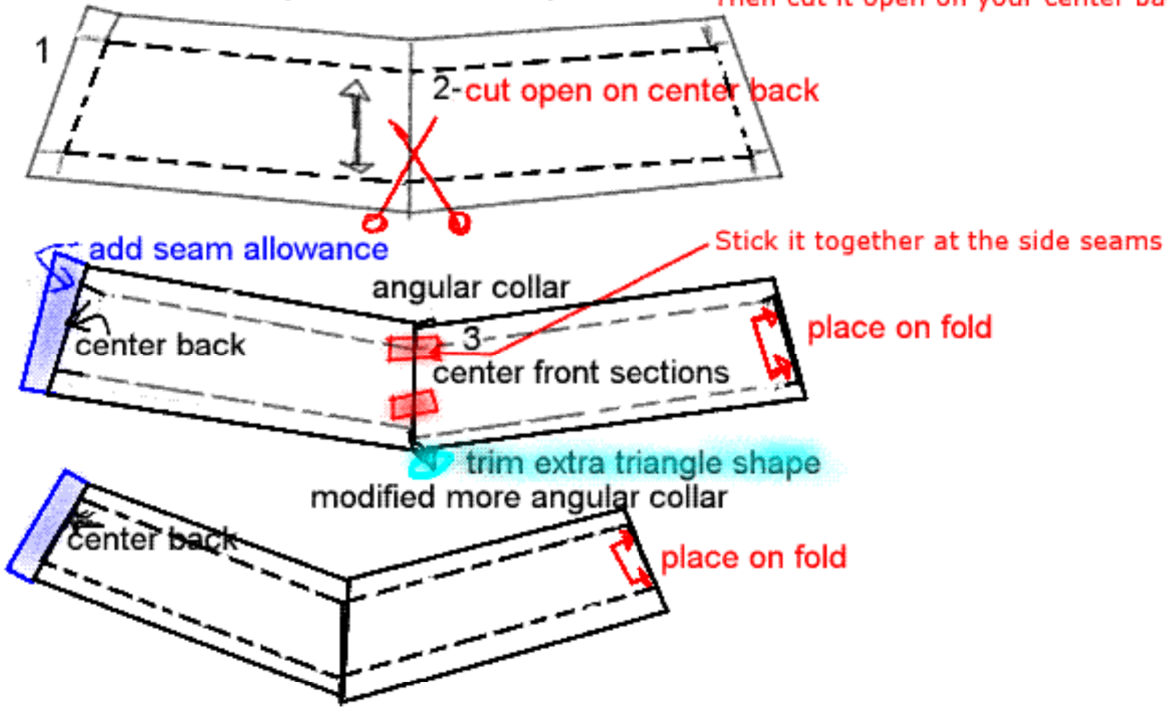


Diagram 7



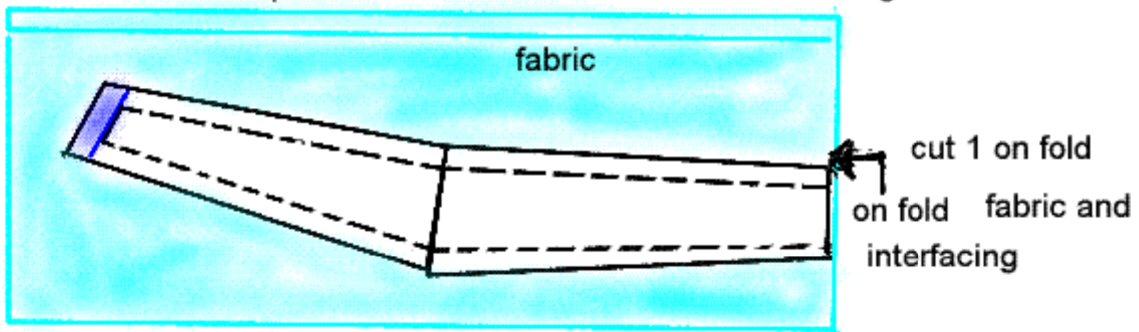
Top Collar: Change to express collar

Express Collar Preparation: **Cut your collar pattern on fold - paper first Then cut it open on your center back**

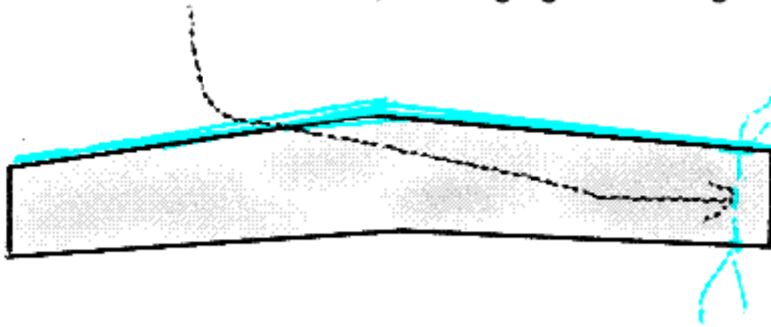


Cut one collar on fold of fabric, cut interfacing (only one pattern), press, sew center back seam, and sew collar, press seams open, grade and turn collar, press again.

Position pattern on fabric fold Cut fabric, interfacing.

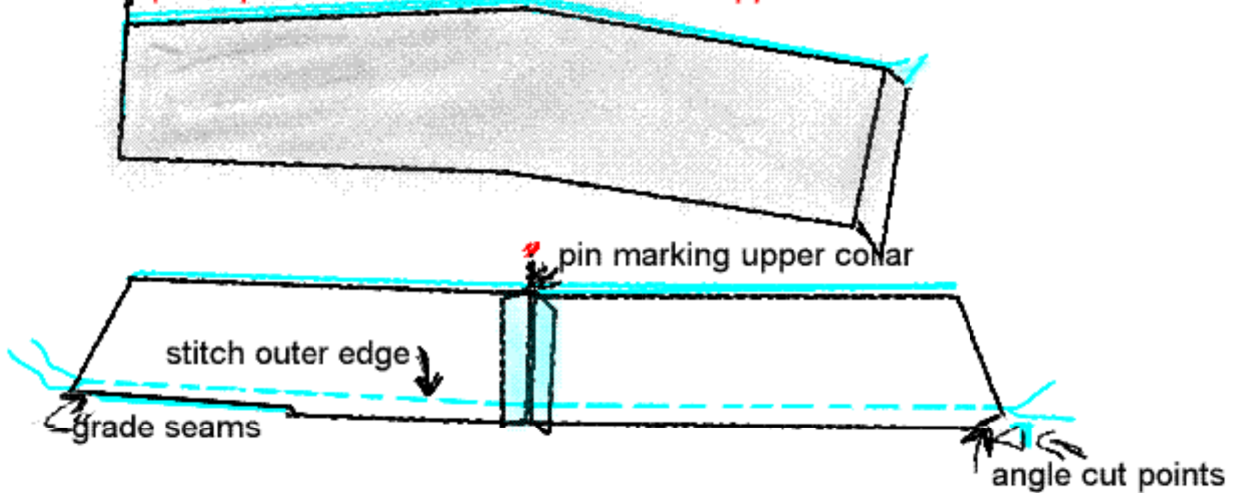


Stitch center back seam, meeting right sides together, press flat then open



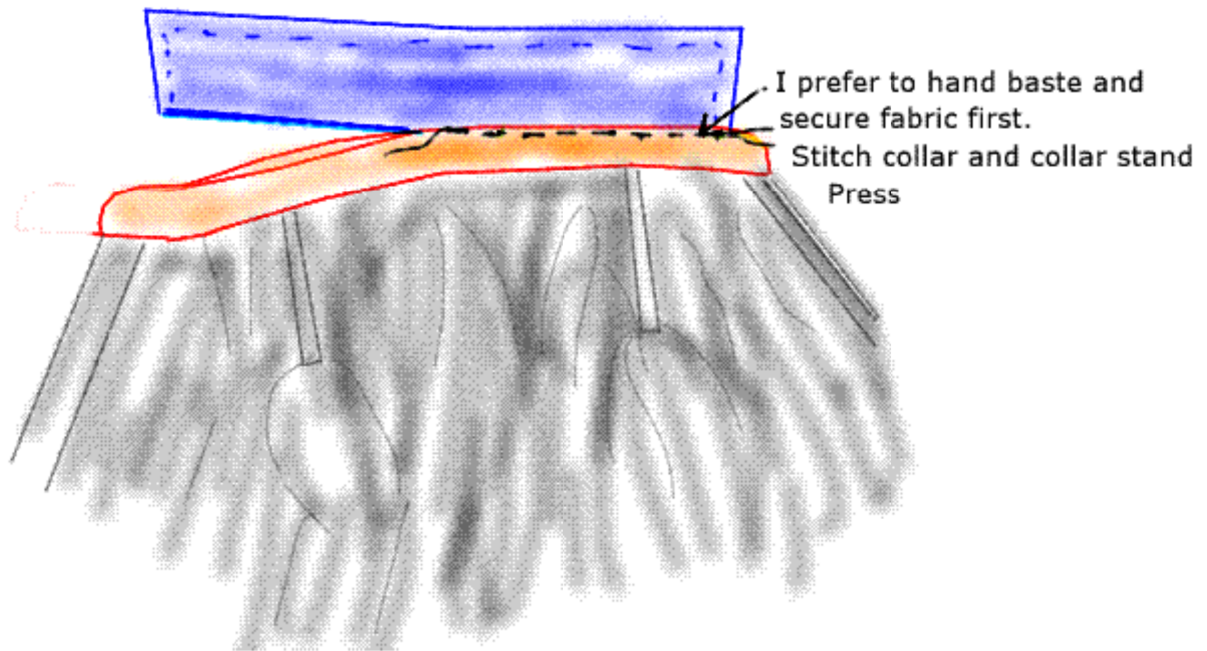
Stitch outer edge of collar

place pin on fold to mark center of the upper collar



Insert express collar - to collarband

Collar to collar stand



Sew button holes and buttons on button placket or try snaps. Finish shirt -Sew side seams, insert sleeves sleeves. Hem shirt.

Enjoy!!!!

NEW Classic Edition

A new Classic Edition (Nr 31) has just been published consisting of 74 fashion-styles & pattern-designs. They are suitable for the fuller figure

If you click on the following link on our website: http://www.dressmaking.co.nz/lutt_patterns.htm and the "**Model Preview**" you can view the patterns in this supplement

The 74 patterns are available for US\$36 plus shipment

Supplement # 277 (Summer)

The most recent Supplement # 277 (Summer) has arrived.

If you click on the following link on our website: http://www.dressmaking.co.nz/lutt_patterns.htm and the "**Model Preview**" you can view the patterns in this supplement

The 40 patterns are available at US\$22 plus shipment. You can also subscribe for a full year and receive 4 supplements of 40 patterns each for US\$66 plus shipment. To order, please go to the ORDER link and follow the instructions on our SECURE website.

The 40 patterns are available at US\$22 plus shipment. You can also subscribe for a full year and receive 4 of 40 patterns each for US\$66 plus postage. To order please go to ORDER and follow the instructions.

Copyright 2010 Lutterloh Patterns NZ. All rights reserved.

Lutterloh Patterns NZ is committed to protecting your privacy. We do not sell, trade, rent or otherwise disclose personal information you provide to us.